

STERISAN - Wall Faced Toilet Suite

SANWC500IW

{{ProductImage}}

GENTEC STERISAN In-Wall Wall Faced Toilet Suite w/ Concealed Cistern Soft Close White Double-flap Seat

4 Star 3.4L average flush
4.6L per full flush/3.0L per half flush

Product Features



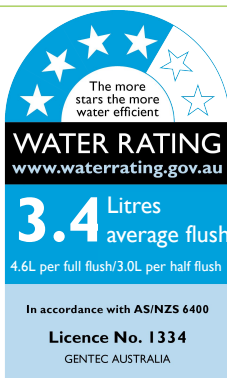
- Water saving rimless hygiene flush
- Double Flap Soft close toilet seat
- Recommended for all projects

Technical Information



Materials	Vitreous China
Inlet	15mm Female Flexible Connection
Working Pressures	50kPa-500kPa
Recommended Working Pressures	350kPa
S-Trap	S-Trap: Included / Adjustable (P-Trap capable)
Finish / Colour	White Glaze
Warranty	2 Years (Base Warranty)

Product Certifications



WELS:LM07567



WaterMark

AS 1172.1:2014
AS 1172.2:2014
Lic: WMK26220
SAI Global



A: Unit 6, 20 - 28 Ricketty St, Mascot, NSW 2020
P: +612 9319 4422
F: +612 8088 7635
E: info@gentecaustralia.com.au

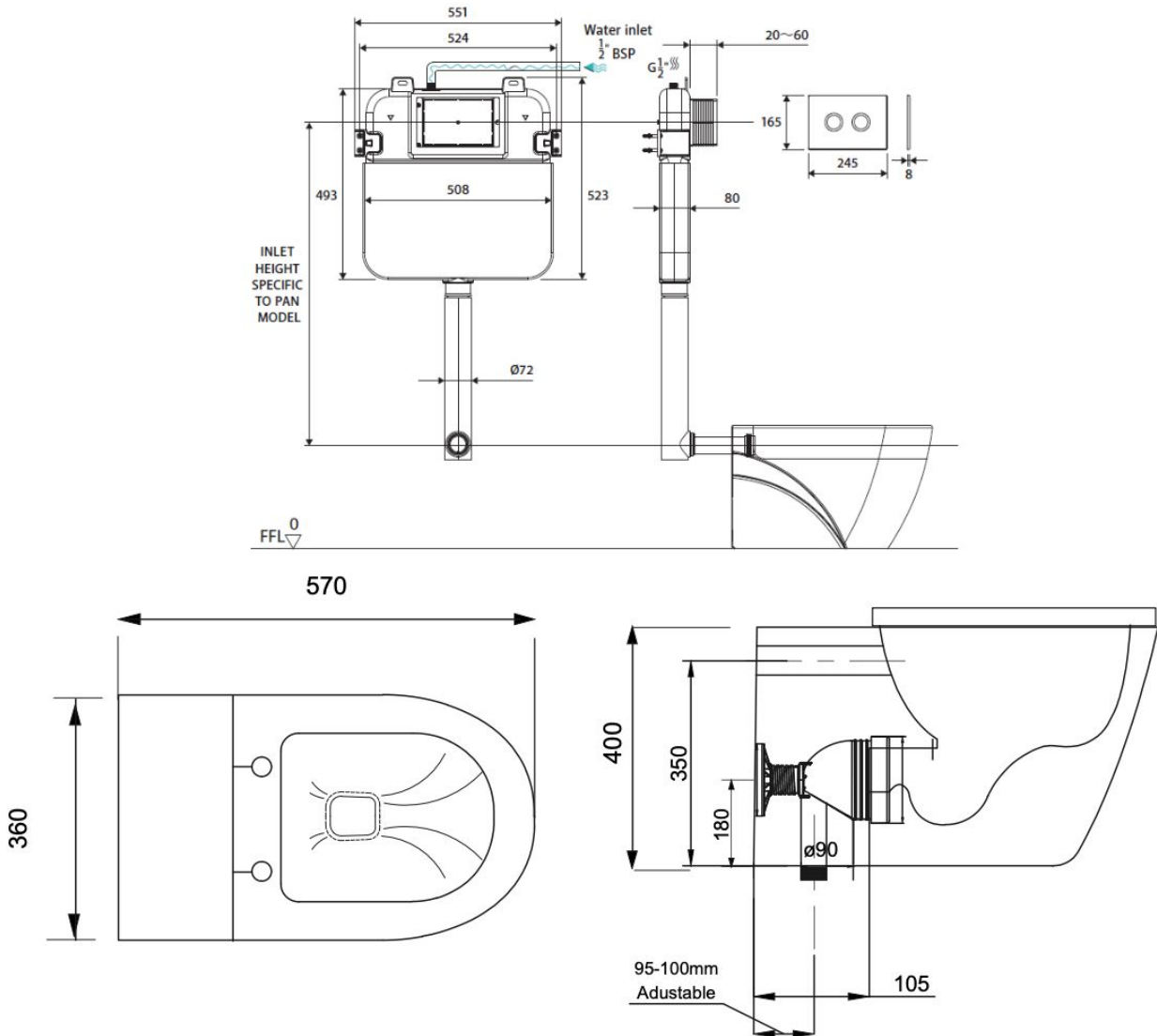


Gentec products come with a Manufacturer's Warranty. To ensure the validity of this warranty, Gentec products must be installed following the provided installation instructions and adhering to AS 3500, NCC Volume Three, relevant Australian Standards, and any local authority requirements applicable to the product. Additionally, water and electrical supply conditions must meet the appropriate national and/or state standards. Non-compliance with these provisions may impact product performance and void the warranty.

Technical Drawings



All measurements are in millimetres and should be used as a guide only.



All measurements are in millimetres and should be used as a guide only

Disclaimer: Stainless Steel Grades 304 & 316 are manufactured with ZERO* Lead.



A: Unit 6, 20 - 28 Ricketty St, Mascot, NSW 2020

P: +612 9319 4422

F: +612 8088 7635

E: info@gentecaustralia.com.au



Note: The information provided is only a guide, actual product may differ. The information here should not be relied on without clarification with Gentec. Gentec reserves the right to make design changes at any time without notification.

Subject to terms and conditions. For detailed warranty information, installation compliance, maintenance and cleaning guidelines, and other relevant details, please visit <https://gentecaustralia.com.au>